

EverPlay:

Ever Adaptable, Ever Safe, Ever Durable

The ultimate outdoor moveable play system for childcare centres, kindergartens, and preschools.



PLAY 'n' LEARN
Developing Creative Minds



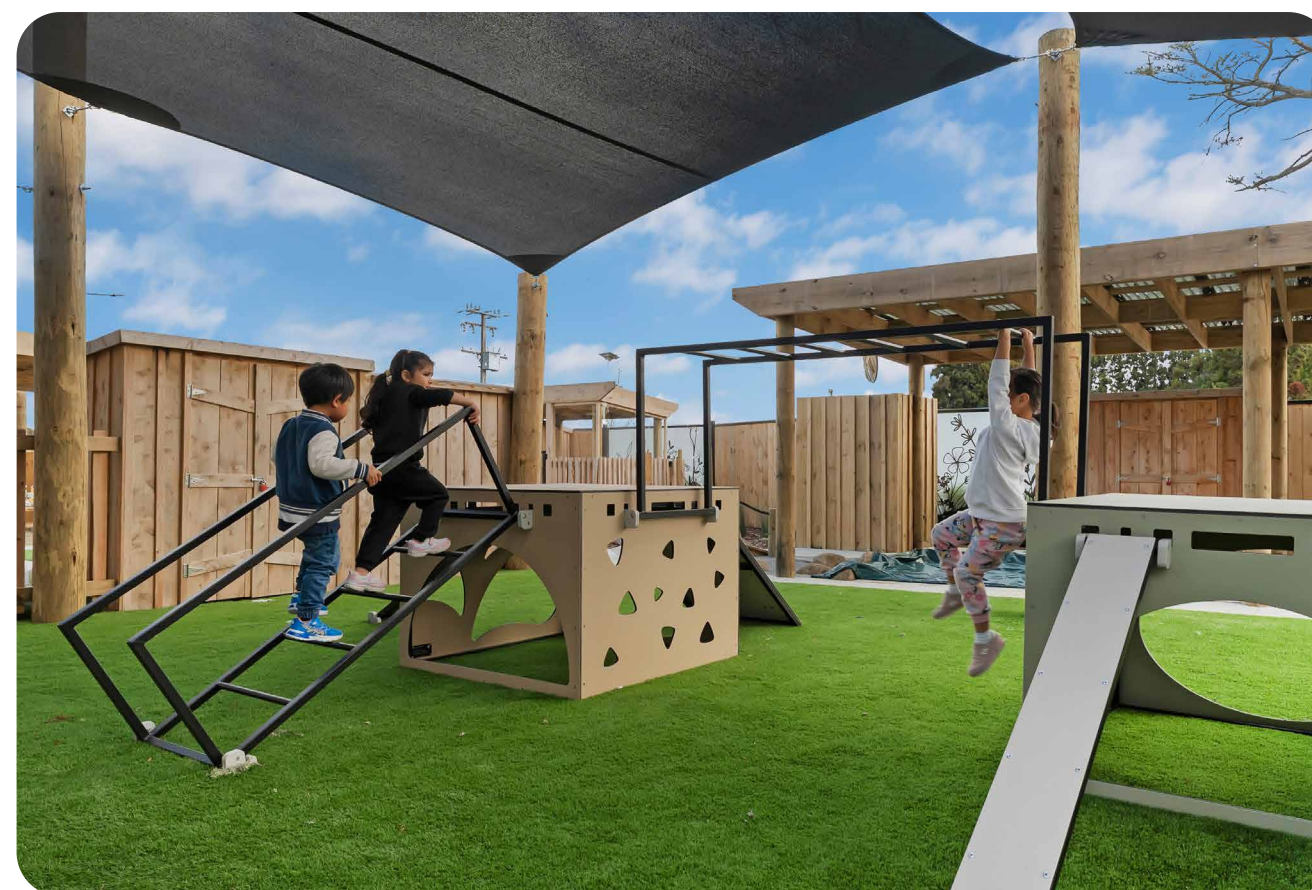
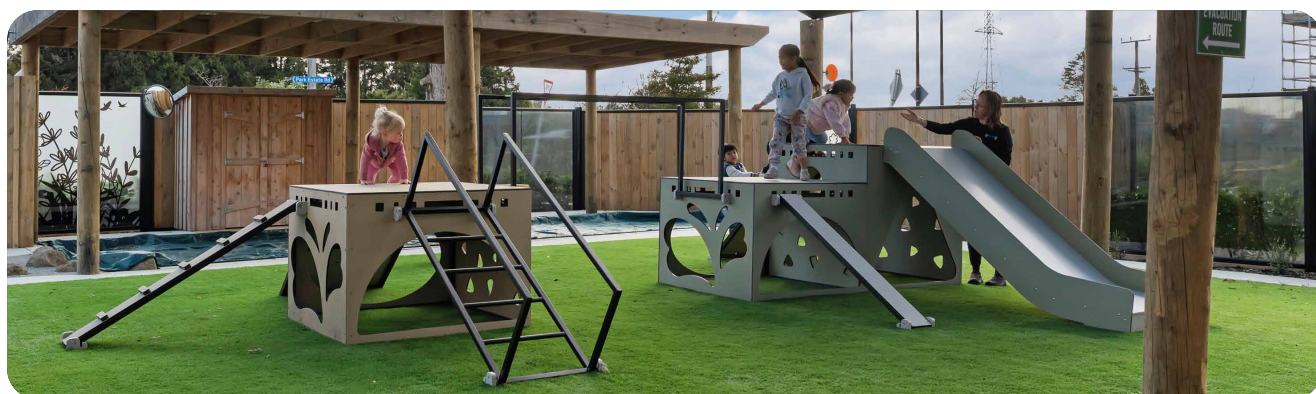
What is EverPlay?

EverPlay is a reconfigurable outdoor play system designed to grow with your playspace, your children, and your curriculum.

It is built around lightweight, ultra-durable EverPlay Boxes. These modular platforms support climbing, crawling, balancing and exploring. QuickClip attachments such as slides, tunnels and rope climbers hook easily into the boxes at different heights to suit a range of ages.

Because the layout can be reconfigured again and again, children stay engaged as the play environment evolves with them.

The modular design means you can start small and expand over time. **With minimal maintenance, a 10-year warranty and over 30 years of usable life, EverPlay is a practical long-term investment for safe, dynamic outdoor play.**





How EverPlay works

Evaluate your playground needs

Review your current outdoor setup. Consider soft fall coverage, supervision zones, and any existing equipment.

Do you need a complete play solution with climbing, swinging and sliding? Or just selected elements to complement what you already have?

Choose your EverPlay set

Select a modular set to match your goals, age group and available space. You can start small and expand over time.

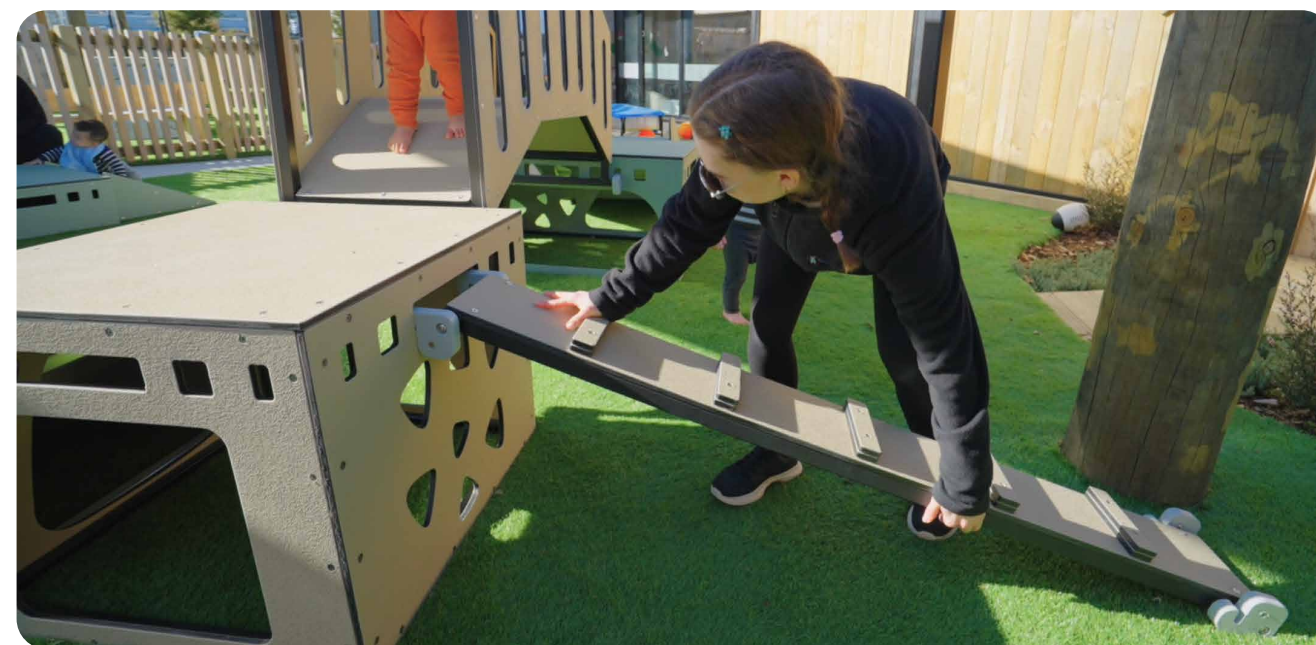
Reconfigure anytime

Change the layout regularly to keep play fresh, challenge children in new ways, and support evolving learning goals.



“The children are really enjoying the challenges that the EverPlay climbing equipment bring! It is a great resource in helping to develop our children’s balance, coordination and overall confidence! We find the product to be sturdy yet light for staff to be able to move and interchange the pieces, it can be a different playground each week; and of course we just love the durable material that it is made of - no need for repaints!!”

Manager, Busy Bees Montessori





Built for Safety.

EverPlay is engineered and manufactured with safety at its core and play at its heart. Every component is independently certified by **CCEP**, the leading authority for playground engineering & safety, to meet or exceed the following standards:



AS 4685:2021 & AS 4685.0:2017 (Australia)



NZS 5828:2015 (New Zealand)



EN 1176:2017 (United Kingdom & EU)



Anti-slip EnduraPanel surfaces

Provides safe footing for children, even in wet conditions.



QuickClip connection system

The easiest-to-use connection system available to teachers, while ensuring stable, safe transitions between components.



10-year structural warranty

Designed for over 30 years of functional life in outdoor environments.



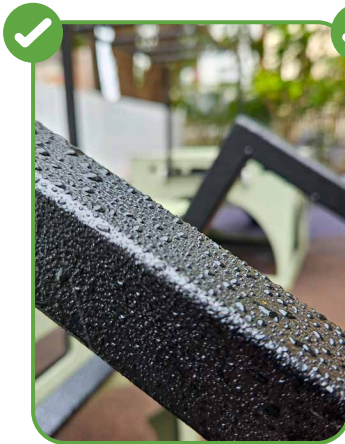


Buy Once, Buy Right

Before choosing a play system, it pays to look beyond upfront costs. Consider longevity, sustainability, and ease of reconfiguration, all of which impact your centre over time. The table below shows how EverPlay measures up against other moveable play solutions and traditional fixed playgrounds.

Comparative Chart:

Comparison	EverPlaybyPlay'n'Learn	Alternative Moveable Play Providers	Traditional Fixed Playgrounds
Sustainability	- 100% recyclable materials (EnduraPanel & aluminium) - Zero-waste manufacturing processes	- Often partial or no recycling options - May rely on plywood or lesser-grade metals	- Typically not easily recyclable - Requires significant site prep and construction
Maintenance	- No repainting	- Often requires periodic repainting or repairs - Prone to rust or rot	- Higher upkeep costs (paint, timber treatment, replacement parts)
Lifespan	- 30+ years practical life - 10-year warranty	- Varies (5–10 years) - Warrantees differ, often shorter	- Can last 20+ years if well maintained but deteriorates more rapidly in some areas
Usability	- QuickClip system for instant reconfiguration - Lightweight attachments	- Reconfigurable but attachments can be heavy or awkward - Limited adjustment	- Not reconfigurable once installed - Changes often require costly construction
Engagement	- Endless variety - children stay engaged - Suits multiple ages and abilities	- Some variety, - children can get bored - Adjustments tend to be more cumbersome	- Static design —children may lose interest over time
Overall Value	- Low total cost of ownership - High play value & sustainability	- Medium- to long-term costs can rise with maintenance	- Large upfront investment plus ongoing upkeep - Difficult to move or upgrade



No more rusting playground equipment - EverPlay's low maintenance solution



Playing Today, Protecting Tomorrow.

EverPlay is leading the way in sustainable play equipment with eco-conscious design and zero-waste manufacturing. EnduraPanel, used in all playboxes and attachments, is made with recycled materials and can be recycled at the end of its lifecycle. Aluminium frames are also infinitely recyclable, contributing to a closed-loop production process.

Sustainability Highlights:

- **Closed-Loop Recycling:** EnduraPanel can be reprocessed into new panels, eliminating waste and reducing reliance on virgin materials.
- **Durability That Lasts:** Long-lasting materials reduce the need for replacements, supporting sustainable use.
- **Zero-Waste Manufacturing:** Every offcut from production is reused, ensuring no material goes to waste.



Sustainable play that stands the test of time.





EVACUATION
ROUTE
←

Park Estate Rd



Case Studies

Only About Children Torquay



Kiddiwinks Warriewood Jubilee





More EverPlay options available at www.everplay.com.au

Tunnel Explorer Moveable Play Set (5pcs)

Hide-and-seek plus sensory crawl-through fun.

Colours Available:



ENVIRO FRIENDLY



Compact Explorer Moveable Play Set (5pcs)

Crawl, climb, balance in tight outdoor areas.

Colours Available:



ENVIRO FRIENDLY



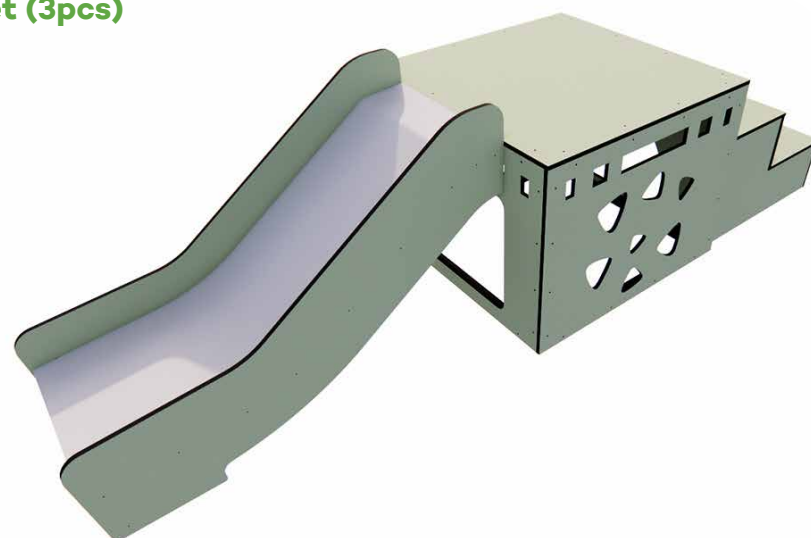
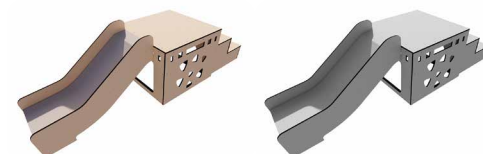
Steps & Slide Moveable Play Set (3pcs)

First climbs and gentle slide for confidence-building.

Colours Available:



ENVIRO FRIENDLY



More EverPlay options available at www.everplay.com.au

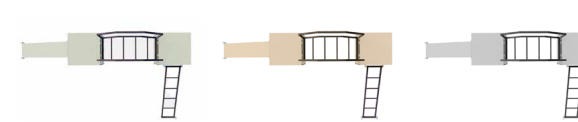
Climbers' Challenge Moveable Play Set (5pcs)

Rope walk, scaling wall, balance tasks.

Colours Available:



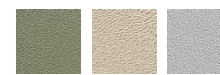
ENVIRO FRIENDLY



Preschool Starter Moveable Play Set (7pcs)

Confidence climbs to 88 cm.

Colours Available:



ENVIRO FRIENDLY



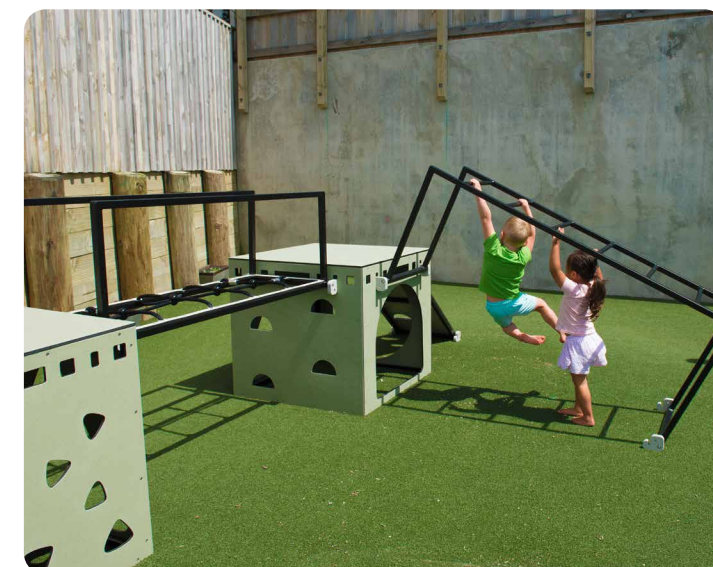
Preschool EverPlay Set (9pcs)

An entire playground in one kit for big-group play.

Colours Available:



ENVIRO FRIENDLY





EverPlay Water Tray

EverPlay Water Tray are versatile, all-weather plastic trays designed for safe, engaging play. With smooth edges and a spacious design (110cm diameter x 52cm height), they support a range of activities from sensory play with sand, water, and paint to fossil exploration and group projects. The included lid doubles as a table for messy or construction play, featuring an anti-spill lip and a plug for easy draining.



White



Fern



Blue



Sand



"Very easy to move around the environment. Love that you can flip it upside down and fill it if only wanting a small amount of water out."



"These troughs are great and super versatile. You can use them with the lid on as a table, use the lid as a tray on the ground or on another table, and use the trough up both ways. They're not too heavy and can be rolled as they're made from durable plastic!"

Manager, Bayview ELC







Developing Creative Minds

10 Herb Elliott Ave
Sydney Olympic Park, NSW 2127
Australia

03 9917 5247

hello@playnlearn.com.au

everplay.com.au

